

**NOTE:** It is our policy to continually improve products and as such we reserve the right to alter data, specifications and component parts without prior notice. There may be alternative versions of this product, please contact us should you require this information.

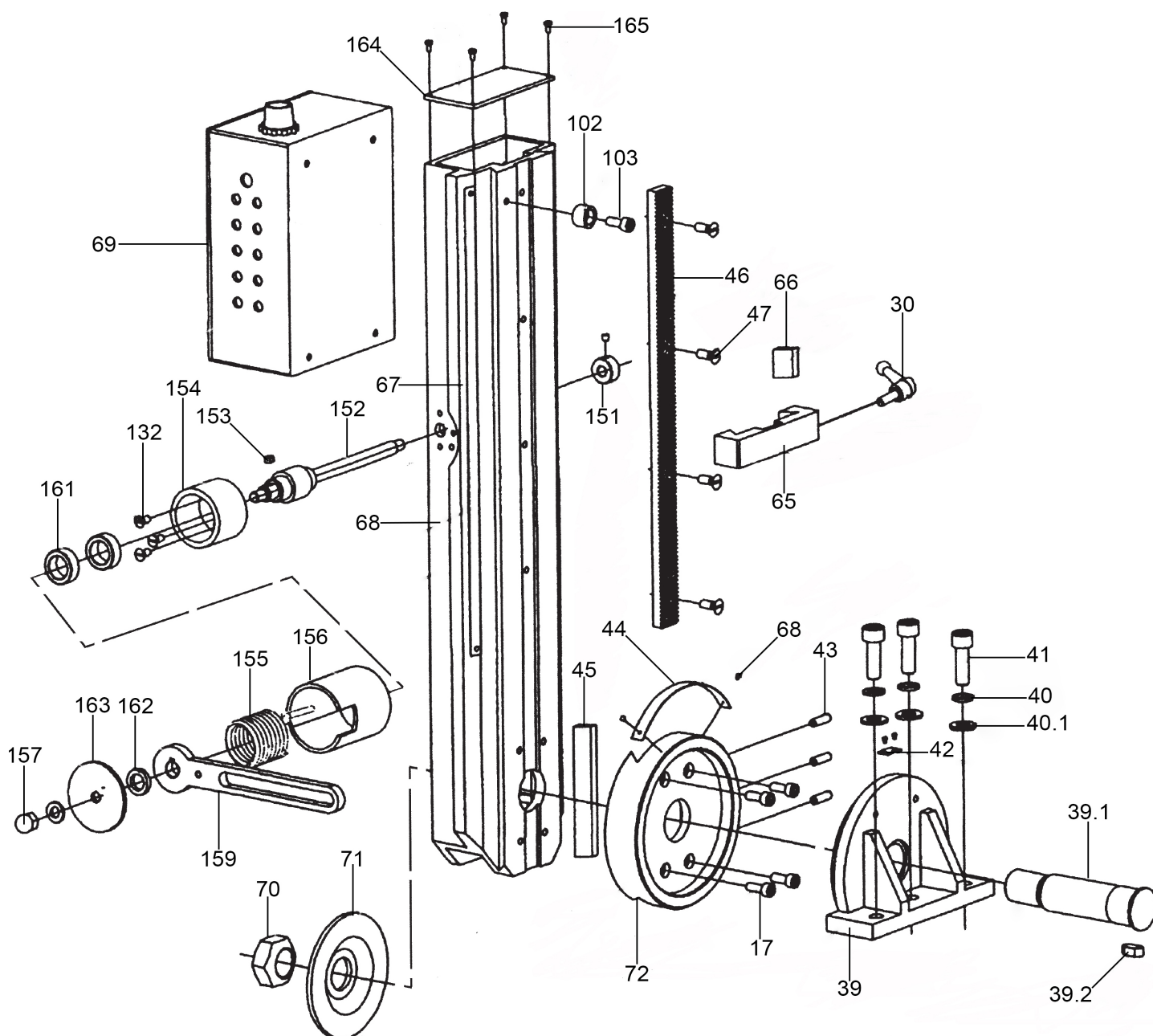
**IMPORTANT:** No liability is accepted for incorrect use of product. Spare parts must be fitted by a competent person

**WARRANTY:** Guarantee is 12 months from purchase date, proof of which will be required for any claim.

Jack Sealey Ltd t/a Sealey Group, Kempson Way, Suffolk Business Park, Bury St Edmunds, Suffolk, IP32 7AR UK

Jack Sealey (EU) Ltd t/a Sealey Group, Farney Street, Carrickmacross, Co. Monaghan, A81 PK68 Ireland

Tel: 01284 757500 • Email: [sales@sealey.co.uk](mailto:sales@sealey.co.uk) • Web: [www.sealey.co.uk](http://www.sealey.co.uk)



**NOTE:** It is our policy to continually improve products and as such we reserve the right to alter data, specifications and component parts without prior notice. There may be alternative versions of this product, please contact us should you require this information.

**IMPORTANT:** No liability is accepted for incorrect use of product. Spare parts must be fitted by a competent person

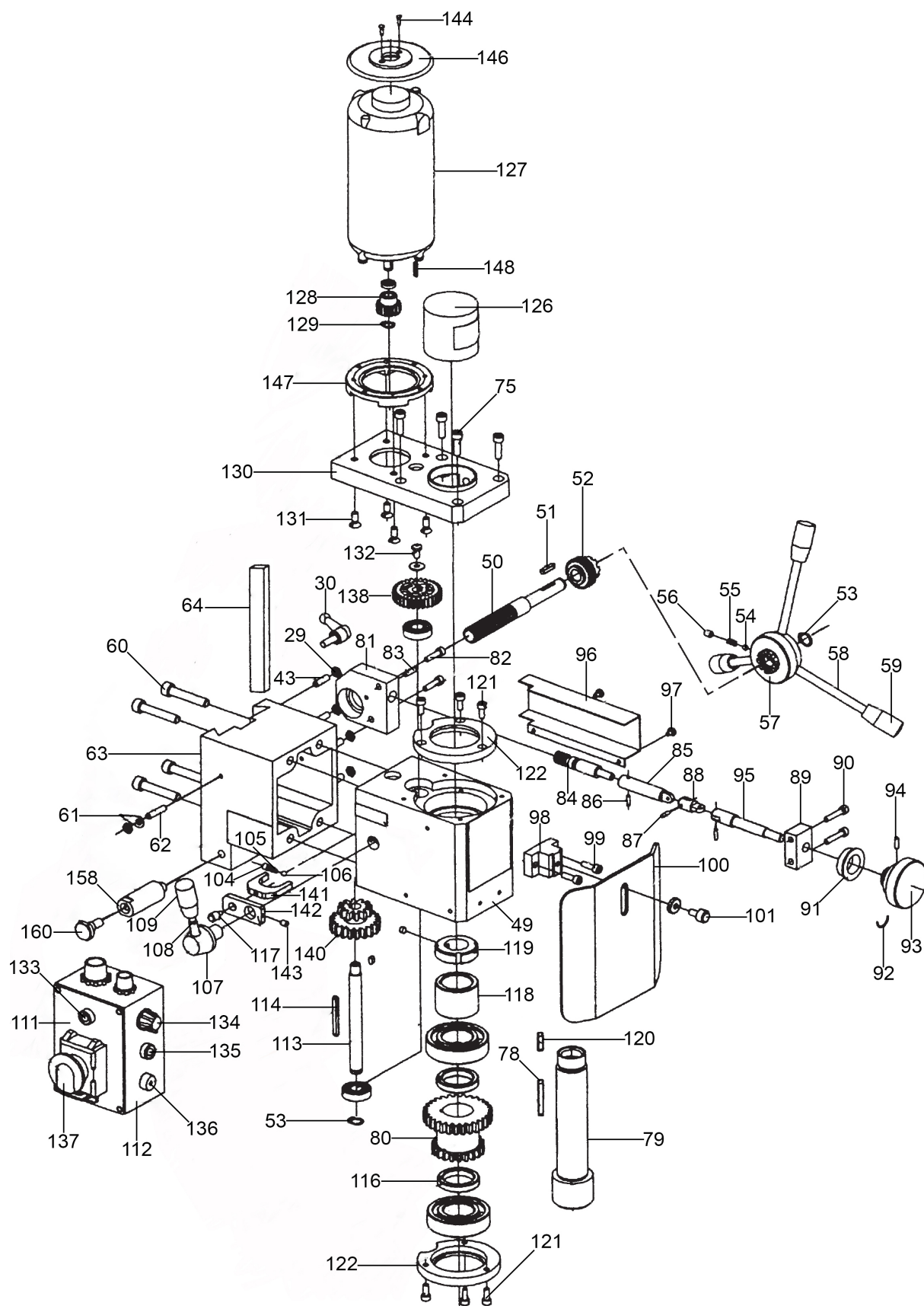
**WARRANTY:** Guarantee is 12 months from purchase date, proof of which will be required for any claim.

Jack Sealey Ltd t/a Sealey Group, Kempson Way, Suffolk Business Park, Bury St Edmunds, Suffolk, IP32 7AR UK

Jack Sealey (EU) Ltd t/a Sealey Group, Farney Street, Carrickmacross, Co. Monaghan, A81 PK68 Ireland

Tel: 01284 757500 • Email: [sales@sealey.co.uk](mailto:sales@sealey.co.uk) • Web: [www.sealey.co.uk](http://www.sealey.co.uk)

## Parts Information: Mini Drilling & Milling Machine Model No: SM2502



**NOTE:** It is our policy to continually improve products and as such we reserve the right to alter data, specifications and component parts without prior notice. There may be alternative versions of this product, please contact us should you require this information.

**IMPORTANT:** No liability is accepted for incorrect use of product. Spare parts must be fitted by a competent person

**WARRANTY:** Guarantee is 12 months from purchase date, proof of which will be required for any claim.

Jack Sealey Ltd t/a Sealey Group, Kempson Way, Suffolk Business Park, Bury St Edmunds, Suffolk, IP32 7AR UK

Jack Sealey (EU) Ltd t/a Sealey Group, Farney Street, Carrickmacross, Co. Monaghan, A81 PK68 Ireland

Tel: 01284 757500 • Email: [sales@sealey.co.uk](mailto:sales@sealey.co.uk) • Web: [www.sealey.co.uk](http://www.sealey.co.uk)



# Parts Information: Mini Drilling & Milling Machine Model No: SM2502

Item	Part No.	Description
1	SM2502.001	Base
2	SM2502.002	X-Axis Feeding Screw
2.1	SM2502.002-1	Key 4 x 16mm
4	SM2502.004	Dial
5	SM2502.005	Hand Wheel
6	SN8.S	Steel Nut M8
7	SM2502.007	Knob, Handle, Plastic, (Ø18 x 40 x Ø8mm)(F)
8	SM2502.008	Screw M8 x 55mm
9	SM2502.009	Cap Screw M6 x 8mm
10	SM2502.010	Holding Plate 1
11	SM2502.011	Dust Guard Cover
12	SM2502.012	Holding Plate 2
14	SM2502.014	Washer
16	SM2502.016	Y-Axis Ruler
17	SM2502.017	Cap Screw M6 x 16mm
18	SM2502.018	Y-Axis Bearing Seat
19	SM2502.019	Working Table
20	SM2502.020	Y-Axis Feeding Screw
21	SM2502.021	End Cover
22	SM2502.022	Screw M6 x 16mm
23	SM2502.023	Y-Axis Screw Nut
24	SM2502.024	Holding Plate 3
25	SM2502.025	Dust Guard Cover
26	SM2502.026	Screw Seat
27	SM2502.027	Cap Screw M6 x 16mm
28	SM2502.028	Set Screw M6 x 22mm
29	SN6.S	Steel Nut M6
30	SM2502.030	Locking Handle M6 x 25mm
31	SM2502.031	Screw M6 x 10mm
32	SM2502.032	Guide Finger
33	SM2502.033	Screw M6 x 8mm
34	SM2502.034	X-Axis Wedge
35	SM2502.035	Saddle
36	SM2502.036	Y-Axis Wedge
37	SM2502.037	X-Axis Screw Nut
38	SM2502.038	Cap Screw M6 x 25mm
39	SM2502.039	Column Seat
39.1	SM2502.039-1	Shaft
39.2	SM2502.039-2	Key 8 x 12mm
40	SM2502.040	Spring Washer 10

Item	Part No.	Description
40.1	SM2502.040-1	Washer
41	SM2502.041	Cap Screw M10 x 30mm
42	SM2502.042	Guide Finger
43	SM2502.043	Set Screw M6 x 22mm
44	SM2502.044	Ruler
45	SM2502.045	Wedge
46	SM2502.046	Gear Rack
47	SM2502.047	Cap Screw M6 x 16mm
49	SM2502.049	Spindle Box
50	SM2502.050	Pinion
51	SM2502.051	Woodruff Key 4 x 25mm
52	SM2502.052	Bevel Gear
53	RE231V3-06	External Circlip ID: 10.9mm
54	SB-5.6	Steel Ball 5.6mm
55	SM2502.055	Spring Ø4.8mm
56	SM2502.056	Screw M6 x 8mm
57	SM2502.057	Handle Stock
58	SM2502.058	Operating Lever (Set of 3)
59	SM2502.059	Lever Cap
60	SM2502.060	Cap Screw M8 x 25mm
61	SM2502.061	Guide Finger
62	SM2502.062	Cap Screw M6 x 25mm
63	SM2502.063	Spindle Box Seat
64	SM2502.064	Wedge
65	SM2502.065	Limit Block
66	SM2502.066	Wedge
67	SM2502.067	Ruler
68	SM2502.068	Column
69	SM2502.069	Electric Box
70	NLN24.S	Nyloc Nut M24
71	SM2502.071	Big Washer
72	SM2502.072	Connecting Strut
75	SM2502.075	Cap Screw
78	SM2502.078	Key (5 x 5 x 40mm)
79	SM2502.079	Spindle
80	SM2502.080	Transmission Gear
81	SM2502.081	Support Block
82	SM2502.082	Screw M5 x 20mm
83	SM2502.083	Pin 4 x 15mm
84	SM2502.084	Worm

**NOTE:** It is our policy to continually improve products and as such we reserve the right to alter data, specifications and component parts without prior notice. There may be alternative versions of this product, please contact us should you require this information.

**IMPORTANT:** No liability is accepted for incorrect use of product. Spare parts must be fitted by a competent person

**WARRANTY:** Guarantee is 12 months from purchase date, proof of which will be required for any claim.

**Jack Sealey Ltd t/a Sealey Group**, Kempson Way, Suffolk Business Park, Bury St Edmunds, Suffolk, IP32 7AR UK  
**Jack Sealey (EU) Ltd t/a Sealey Group**, Farney Street, Carrickmacross, Co. Monaghan, A81 PK68 Ireland  
**Tel:** 01284 757500 • **Email:** sales@sealey.co.uk • **Web:** www.sealey.co.uk





# Parts Information: Mini Drilling & Milling Machine Model No: SM2502

Item	Part No.	Description
85	SM2502.085	Sleeve
86	SM2502.086	Pin 3 x 12mm
87	SM2502.087	Pin 3 x 12mm
88	SM2502.088	Adjustable Union
89	SM2502.089	Bracket
90	SM2502.090	Screw M5 x 25mm
91	SM2502.091	Dial
92	SM2502.092	Spring Steel 1.0mm
93	SM2502.093	Small Handle
94	SM2502.094	Grub Screw M4 x 16mm Dog Point
95	SM2502.095	Small Shaft
96	SM2502.096	Cover
97	SM2502.097	Screw M4 x 16mm
98	SM2502.098	Support, Dust Cover
99	SM2502.099	Screw M5 x 16mm
100	SM2502.100	Dust Guard
101	SM2502.101	Clamp Bolt M6 x 12mm
102	SM2502.102	Upper End Washer
103	SM2502.103	Upper End Screw M6 x 16mm
104	SM2502.104	Set Screw M6 x 6mm
105	SM2502.105	Spring (0.8 x 4.8 x 10mm)
106	SM2502.106	Ball 5.0
107	SM2502.107	Handle Seat
108	SM2502.108	Double Head Bolt M8 x 70mm
109	SM2502.109	Knob, Handle, Plastic (Ø18 x 40 x Ø10mm) (F)
111	SM2502.111	Control Box Cover
112	SM2502.112	Control Box
113	SM2502.113	Shaft 1
114	SM2502.114	Key (4 x 4 x 45mm)
116	SM2502.116	Spacing Ring
117	SM2502.117	Small Shaft
118	SM2502.118	Spacing Ring
119	SM2502.119	Spindle Nut
120	SM2502.120	Woodruff Key (5 x 5 x 30mm)
121	SM2502.121	Cap Screw M5 x 8mm
122	SM2502.122	Bearing Cover
126	SM2502.126	Protecting Cover
127	SM2502.127	Motor (External 230V 350W)

Item	Part No.	Description
128	SM2502.128	Motor Gear
129	SM2502.129	Internal Ring 9.0
130	SM2502.130	Motor Seat
131	SM2502.131	Flat Screw M6 x 12mm
132	SM2502.132	Round Screw M5 x 8mm
133	SM2502.133	Lamp, Yellow 220V
134	SM2502.134	Speed Control Switch (c/w Knob)
135	SM2502.135	Lamp, Green 220V
136	SM2502.136	Fuse Box
137	SM3002.170	Emergency Stop Switch
138	SM2502.138	Gear
140	SM2502.140	Transmission Gear
141	SM2502.141	Bar
142	SM2502.142	Linking Board
143	SM2502.143	Set Screw M5 x 8mm
144	SM2502.144	Screw ST2.9 x 8mm
146	SM2502.146	Motor Cover
147	SM2502.147	Connecting Flange, Motor
148	SM2502.148	Screw M6 x 10mm
151	SM2502.151	Lock Sleeve
152	SM2502.152	Rotor Shaft
153	SM2502.153	Key 4 x 6mm
154	SM2502.154	Spring Support
155	SM2502.155	Torsion Spring
156	SM2502.156	Cover
157	SM2502.157	Nut
158	SM2502.158	Prop
159	SM2502.159	Supporting Shank
160	SM2502.160	Washer
161	SM2502.161	Washer
162	SM2502.162	Internal Ring 12
163	SM2502.163	Cover
164	SM2502.164	Top cover
165	SM2502.165	Screw M3 x 6mm
--	SM2502.150-N	PCB, Control Board 125 x 88mm (Not Shown)
--	SM2502.CK	Chuck Key T-Shape (Not Shown)
--	SM2502.CB	Speed Controller Box (Not Shown)

**NOTE:** It is our policy to continually improve products and as such we reserve the right to alter data, specifications and component parts without prior notice. There may be alternative versions of this product, please contact us should you require this information.

**IMPORTANT:** No liability is accepted for incorrect use of product. Spare parts must be fitted by a competent person

**WARRANTY:** Guarantee is 12 months from purchase date, proof of which will be required for any claim.

**Jack Sealey Ltd t/a Sealey Group**, Kempson Way, Suffolk Business Park, Bury St Edmunds, Suffolk, IP32 7AR UK

**Jack Sealey (EU) Ltd t/a Sealey Group**, Farney Street, Carrickmacross, Co. Monaghan, A81 PK68 Ireland

**Tel:** 01284 757500 • **Email:** sales@sealey.co.uk • **Web:** www.sealey.co.uk

## Parts Information: Mini Drilling & Milling Machine Model No: SM2502



Item	Part No.	Description
		<b>Accessories - Please see Catalogue for Items shown</b>
B	SM2502CK	Clamping Kit (42pcs)
D	SM2502CSET	Collet Set MT3-M12 Ø4-16mm
E	SM2502EMSET	HSS End Mill Set Ø4-16mm 2 Flute
H	SM2502ICEM	Indexable Carbide End Mill MT3-M12 Ø30mm
F	SM2502MCS	Mill Chuck Set MT3-M12 Ø4-16mm
G	SM2502QV	Quick Vice 100mm
I	SM3002ST	Stand for SM3002, SM2502, SM2503
--	SM2502.ACC-1	Large Wrench (Not Shown)
--	SM2502.ACC-3	Oil Can (Not Shown)
--	SM2502.ACC-4	Locking Pin (Not Shown)
--	SM2502.ACC-5A	Hex Key, 3 x 65mm, Black, Standard (Not Shown)
--	SM2502.ACC-5B	Hex Key, 3 x 65mm, Black, Standard (Not Shown)

Item	Part No.	Description
--	SM2502.ACC-5C	Hex Key, 5 x 85mm, Black, Standard (Not Shown)
--	SM2502.ACC-5D	Hex Key, 6 x 92mm, Black, Standard (Not Shown)
--	SM2502.ACC-6	Socket Head Wrench
--	SM2502.ACC-7A	Double Ended Spanner 8mm - 10mm (Not Shown)
--	SM2502.ACC-7B	Double ended spanner 14mm - 17mm (Not Shown)
--	SM2502.ACC-7C	Double ended spanner 17mm - 19mm (Not Shown)
--	SM2502.ACC-9	Handles (Pair)(Not Shown)
--	SM2502.ACC-10	T - Nuts (Not Shown)
--	SM2502.ACC-11	Fuse Glass 5A 250V 5 x 20mm (Not Shown)
--	SM2502.ACC-12	Draw Bar (Not Shown)
--	SM2502.ACC-13	Drill Chuck, Tapered (Not Shown)

**NOTE:** It is our policy to continually improve products and as such we reserve the right to alter data, specifications and component parts without prior notice. There may be alternative versions of this product, please contact us should you require this information.

**IMPORTANT:** No liability is accepted for incorrect use of product. Spare parts must be fitted by a competent person

**WARRANTY:** Guarantee is 12 months from purchase date, proof of which will be required for any claim.